

# FOR THE FULL BAND

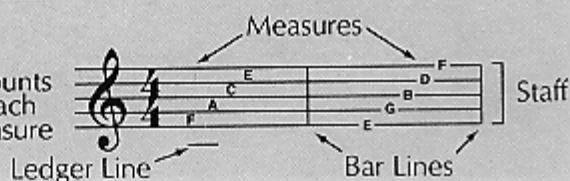
TREBLE  
CLEF



TIME  
SIGNATURE



$\frac{4}{4}$  = 4 counts  
in each  
measure



WHOLE  
NOTE

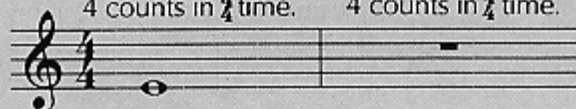


WHOLE  
REST

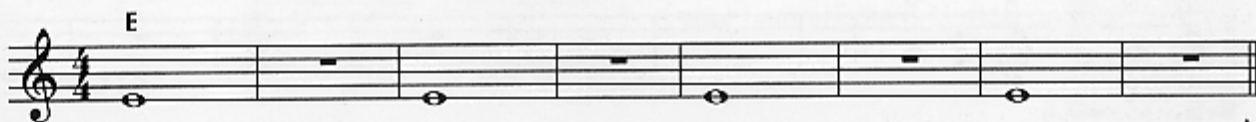


A whole note gets  
4 counts in  $\frac{4}{4}$  time.

A whole rest gets  
4 counts in  $\frac{4}{4}$  time.



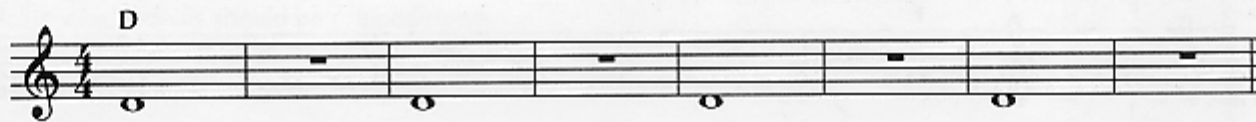
## 1 TIME FOR BAND



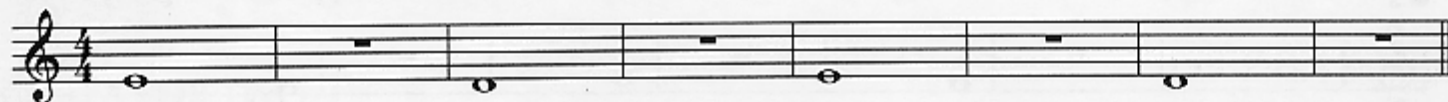
▶ A double bar line marks the end of the music.

The numbers indicate which valves should be pressed down.

## 2 THE FUN CONTINUES



## 3 WHOLE LOTTA COUNTING



▶ Write in the counting and clap the rhythm before you play.

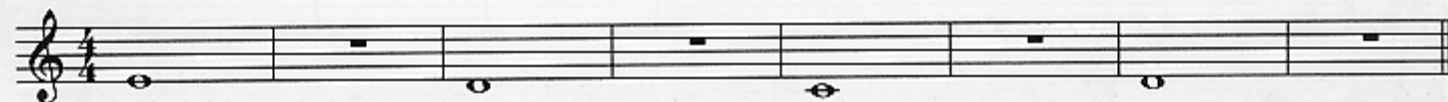
## 4 FOUR SCORE

Page 39

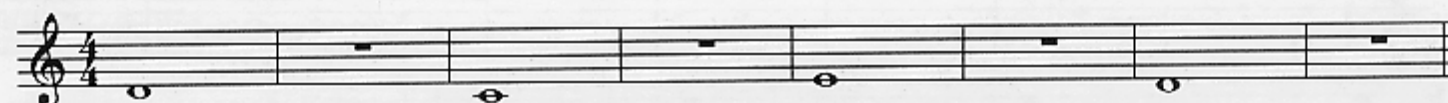


▶ When you see a page number followed by an arrow, *Excellerate* to the page indicated for additional studies.

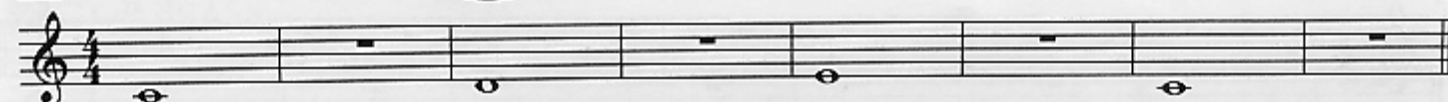
## 5 MIX 'EM UP



## 6 MELTING POT



## 7 BAND ON PARADE



▶ Lines with a medal are *Achievement Lines*. The chart on page 47 can be used to record your progress.